



THE LIVINGSTONE

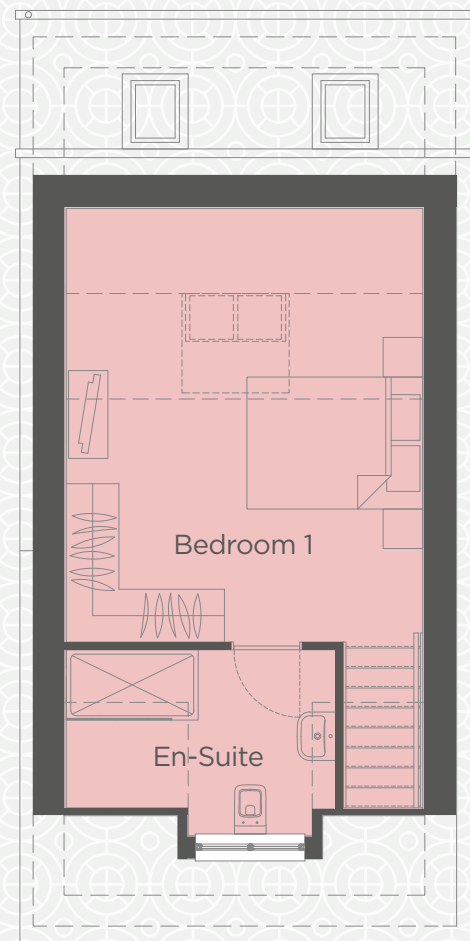
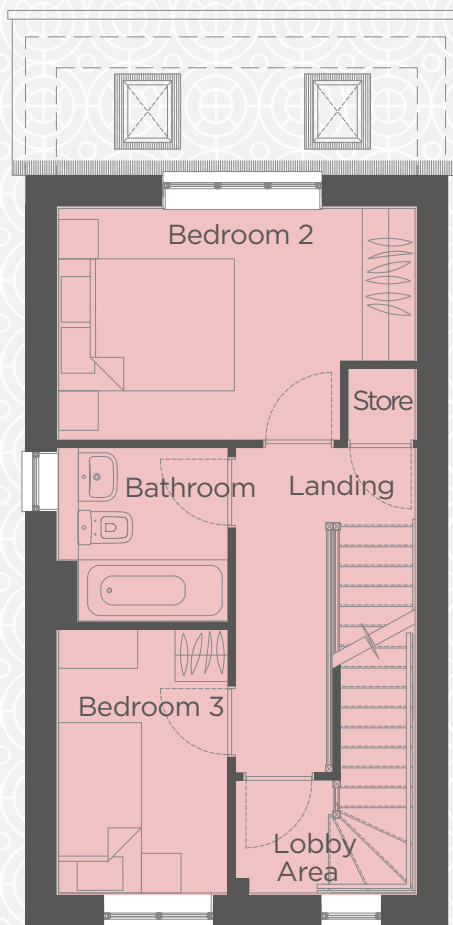
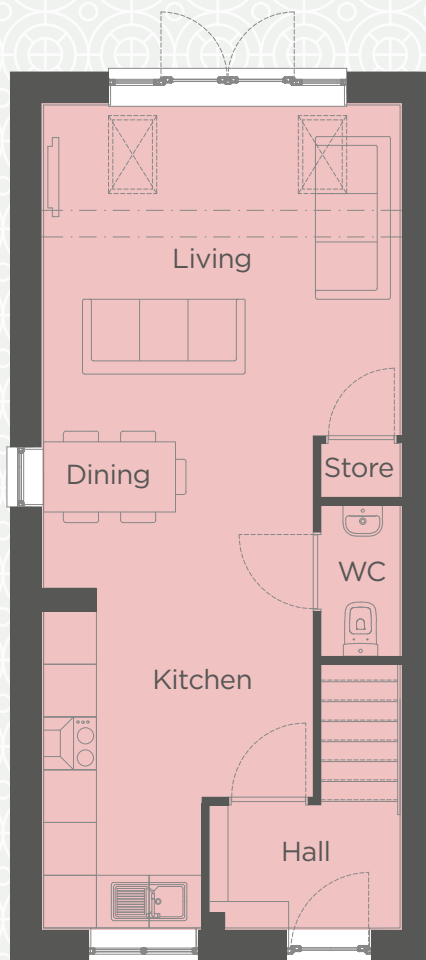
PLOT 25, 26, 27, 28, 56, 57, 65, 66, 73, 74, 79 & 80

3 BEDROOM SEMI-DETACHED

This carefully styled semi-detached townhouse offers a modern living concept on the ground floor with open-plan living/dining/kitchen area including French doors leading to the rear garden. The ground floor is completed with a cloakroom. The second floor includes a double and single bedroom, along with a family bathroom. The property is completed with a master suite on the top floor, including en-suite and dressing area.



HOMES PEOPLE LOVE



THE LIVINGSTONE

| GROUND FLOOR | METRIC | IMPERIAL |
|---------------------------|-----------|---------------|
| Living / Kitchen / Dining | 4.0 x 9.3 | 13'1" x 30'6" |

| FIRST FLOOR | METRIC | IMPERIAL |
|-------------|------------|--------------|
| Bedroom 2 | 4.0 x 2.6 | 13'1" x 8'6" |
| Bedroom 3 | 1.9 x 3.00 | 6'2" x 9'10" |

| SECOND FLOOR | METRIC | IMPERIAL |
|----------------|----------------------------|---------------------------|
| Bedroom 1* | 4.0 x 4.6 | 13'1" x 15'1" |
| Overall | 92.72 m² | 998 ft² |

Please note all dimensions indicated are approximate and for illustrative purposes only. CGIs are examples of their respective housetype. Homes may be 'handed' (mirror image) versions of the illustrations, and may be detached, semi-detached or terraced. The materials used may differ from plot to plot including render and roof tile colours. Detailed plans and specifications are available for inspection for each plot at our Marketing Suite during working hours and customers must check their individual specifications prior to making reservation. March 2022.