



THE BLAKE

PLOTS 12 & 16

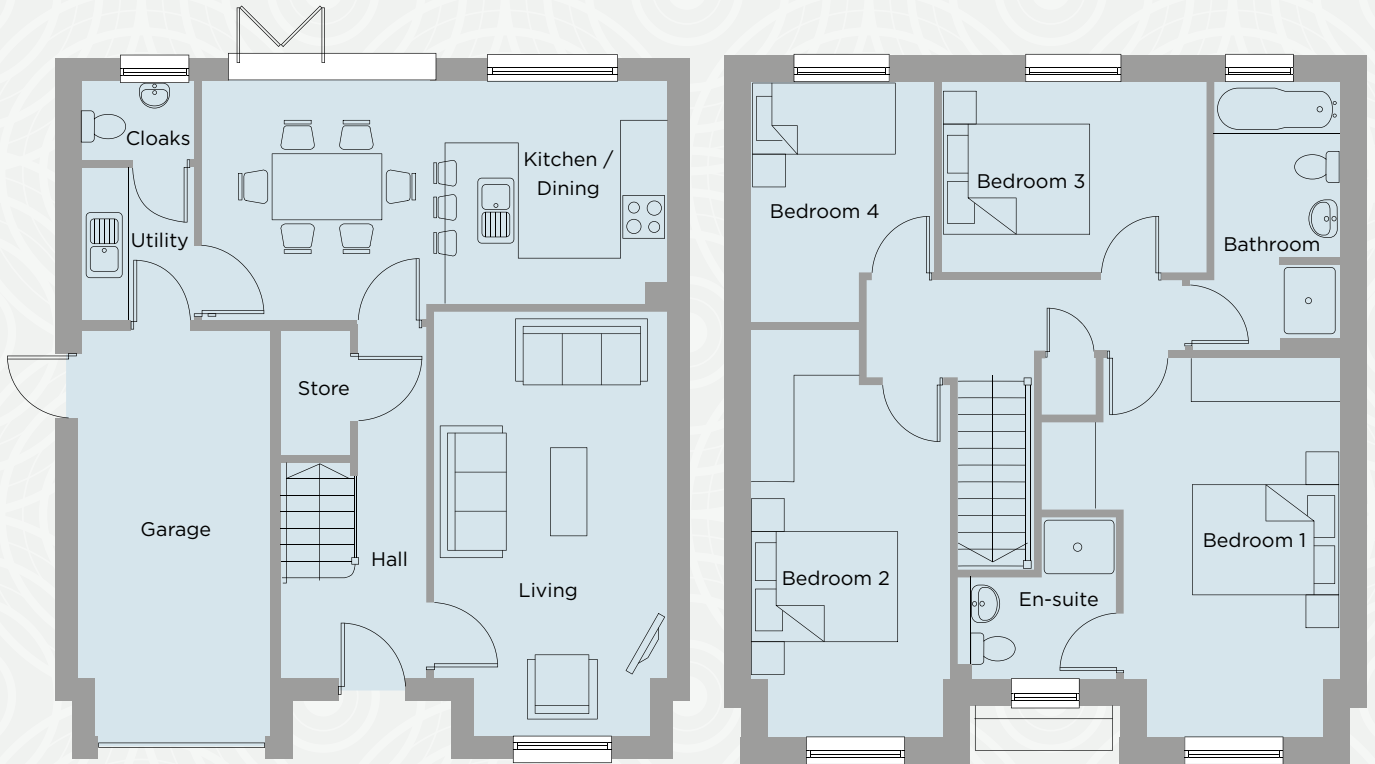
FOUR BEDROOM DETACHED

4

Downstairs, the ground floor of the carefully-styled property benefits from a spacious living room and a modern, contemporary kitchen / diner complete with breakfast area and utility all leading off a generously sized hallway.

A central landing opens up the first floor, leading to four bedrooms, including one double with en-suite, two further doubles, a single and a large family bathroom topping off this sizeable family home.





**THE
BLAKE**

GROUND FLOOR	METRIC	IMPERIAL
Lounge	3.12 x 5.73**	10'3" x 18'9"***
Kitchen / Dining	6.16 x 3.24**	20'2" x 10'8"***

FIRST FLOOR	METRIC	IMPERIAL
Bedroom 1	2.93* x 5.17**	9'7" x 17'0"***
Bedroom 2	2.72 x 5.54**	8'11" x 18'2"***
Bedroom 3	3.60 x 2.57	11'10" x 8'5"
Bedroom 4	2.52 x 3.28**	8'3" x 10'9"***
Overall	123.83 m²	1333 ft²

*minimum **maximum

